

# 2007 Mid-Year Population Estimates

Stirling Council Area

Stirling  
By  
Numbers

July 2008

## BRIEFING NOTE:

### Population Estimates for Scottish Council areas produced by the General Register Office for Scotland (GRO (S))

Population Estimates released by General Register Office for Scotland (GROS) show Stirling's population at 30<sup>th</sup> June 2007 was estimated at 88,190, representing a 0.4% increase on the 2006 estimate of 87,810.

Two factors comprise the GROS estimate:

- A “natural” increase in population with births outnumbering deaths by 39 over the year.
- An estimated net in-migration of 358 people into the Stirling Council area.

For the first time, GRO(S) has produced a more detailed breakdown of migration. Table 1 shows that Stirling has a positive net-migration for both the rest of the UK and overseas. However, it is a different picture within Scotland with almost 3,000 coming to Stirling and a greater number (3,344) leaving Stirling to reside elsewhere in Scotland.

**Table 1 Components of migration for Stirling Council area: 2006-2007**

IN-Migration				OUT-Migration				NET-Migration			
Within Scotland	Rest of UK	Over-seas	Total	Within Scotland	Rest of UK	Over-seas	Total	Within Scotland	Rest of UK	Over-seas	Total
2,998	1,223	849	<b>5,070</b>	3,344	909	459	<b>4,712</b>	-346	314	390	<b>358</b>

Scotland's population is estimated to have increased by 0.5% (27,300 people) to 5,144,200 over the corresponding period. This is largely due to net in-migration, however there were also more births than deaths for the first time in ten years. The latest population estimate is Scotland's highest since 1983.

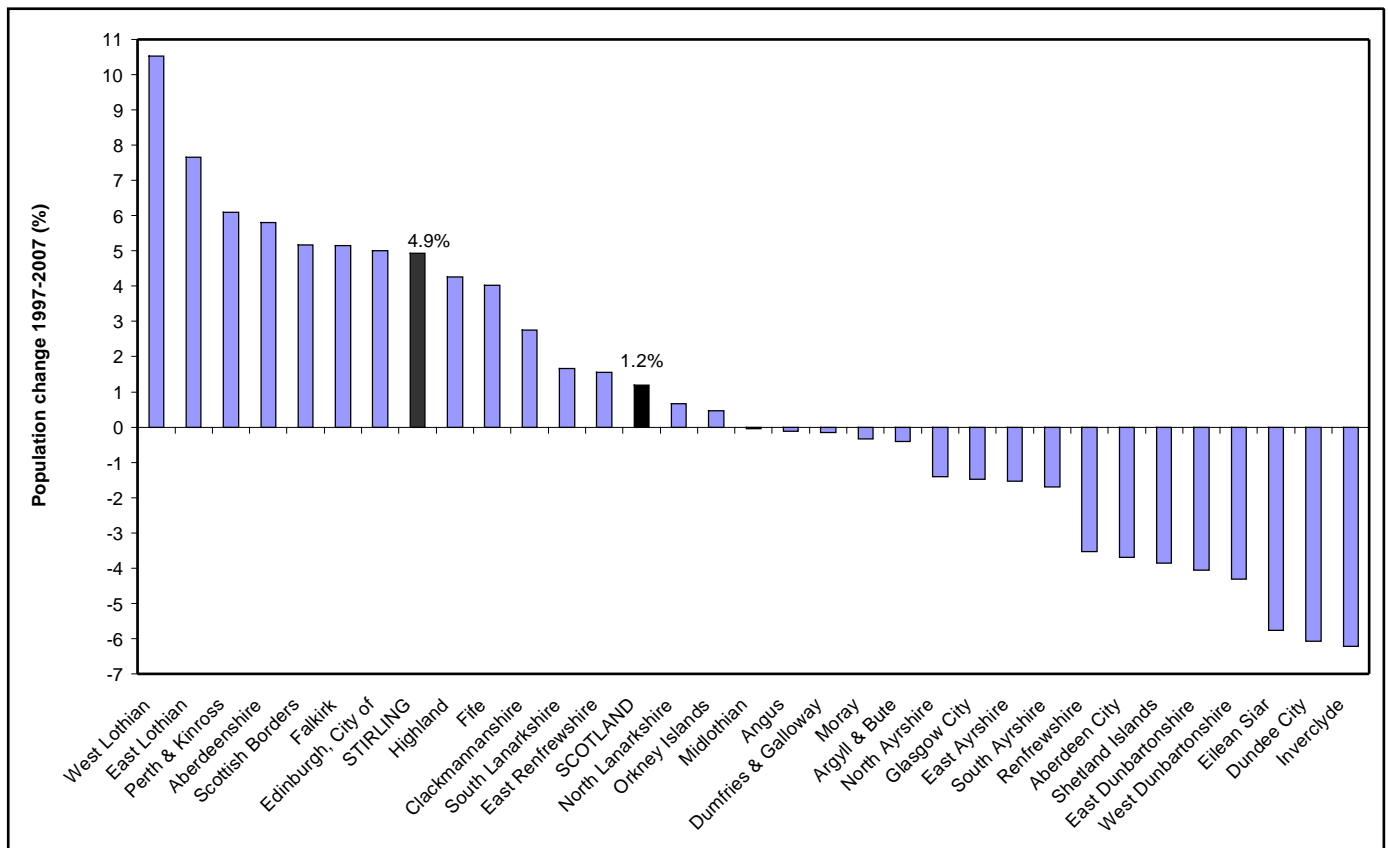
The mid-2007 population estimate for the Forth Valley Health Board area is 288,473, representing a 0.8% increase on the 2006 estimate. In addition to Stirling, this increase is derived from 0.7% and 2% estimated increases in Falkirk and Clackmannanshire Council areas respectively. Clackmannanshire had the largest estimated percentage increase of all Scotland's local authorities.

Chart 1 shows the estimated population change of all local authorities from 1997 to 2007. Fifteen show percentage increases in population whilst seventeen show decreases. The percentage increase in Stirling has been around 4 times the Scottish average.

Stirling's population density is estimated at 40 people per square kilometre. The figure for Scotland is 66, ranging from 8 people per square kilometre in the Highland Council area to 3,316 in Glasgow.

More specific details covering historical data and data broken down by single year of age and gender are available either from the Research Team or from the GRO(S) website: [www.gro-scotland.gov.uk/](http://www.gro-scotland.gov.uk/)

**Chart 1 Population change of all local authorities 1997-2007**



Sources: General Register Office for Scotland

For further information please contact:  
 Paul McNamara  
 Research Team  
 Stirling Council, Old Viewforth  
 Stirling FK8 2ET  
 Tel: 01786 442724  
 email: [mcnamarap@stirling.gov.uk](mailto:mcnamarap@stirling.gov.uk)

24 July 2008