



Stirling's Local Development Plan: Draft Proposed Plan

Community Consultation Session

**Bannockburn Primary School
22nd November 2011**

Purpose of the Local Development Plan (LDP):

- Requirement of Planning, etc. (Scotland) Act 2006
- Update development planning framework
- Guides future use and development of land for next 20 years to meet requirements for: new housing, business space, retail space, schools, infrastructure, etc.
- Safeguards natural and historic built environment
- Promotes sustainable developments
- Accords with Council's Strategic Plan – 'Shaping Stirling 2014' and key strategies (e.g. Economy, Transport, Housing, Open Space, Sustainability, etc.)

Draft Proposed Local Development Plan

- Council's Draft Plan
- Fully participative approach
- Extensive consultation and engagement with:
 - Communities
 - Businesses
 - Elected Members
 - Council Services
 - Community Planning Partners
 - Key Agencies
 - Developers
 - Scottish Government

Draft Proposed Local Development Plan contains:

- **Vision** – realistic expression of what Stirling Local Development Plan area could look like in 20 years time.
- **Spatial Strategy** – sets out “geography” of the Vision – scale, mix and location of new development proposals required to meet economic, social and environmental changes.
- **Planning Policies** – set out how development and use of land should come forward and be assessed.
- **Settlement Statements** – identifies specific development proposals for individual settlements, infrastructure requirements necessary to support new development and area specific planning issues.
- **Supplementary Guidance** - supports the policies and proposals in the Plan.

Vision:

- The Local Development Plan Vision for 2033 for Stirling area is :
- High quality rural and urban environments, enhanced by well designed and integrated new developments
 - Walkable links enhanced by evolving “Green Network” and enjoying superb landscape setting.
 - Modern, vibrant and healthy city - place where people choose to live, work and spend leisure time.
 - Place that attracts more businesses and supports successful and expanding ones.
 - More people are able to work close to and within their homes.
 - More affordable housing and greater range of types and tenures.
 - Levels of social polarisation reduced.

What is the Spatial Strategy?

- Location of appropriate types, scale and phasing of development.
- Focus on main development proposals for period up to year 10 and broad indication of scale and location of growth up to year 20.
- Population growth not the main driver, but a consequence of tackling spatial implications of:
 - Increasing elderly population
 - Meeting housing need and demand
 - Diversifying resident population
 - Attracting greater working age population (to support ageing population)
 - Supporting local business growth
 - Supporting local services

Meeting Housing Need and Demand:

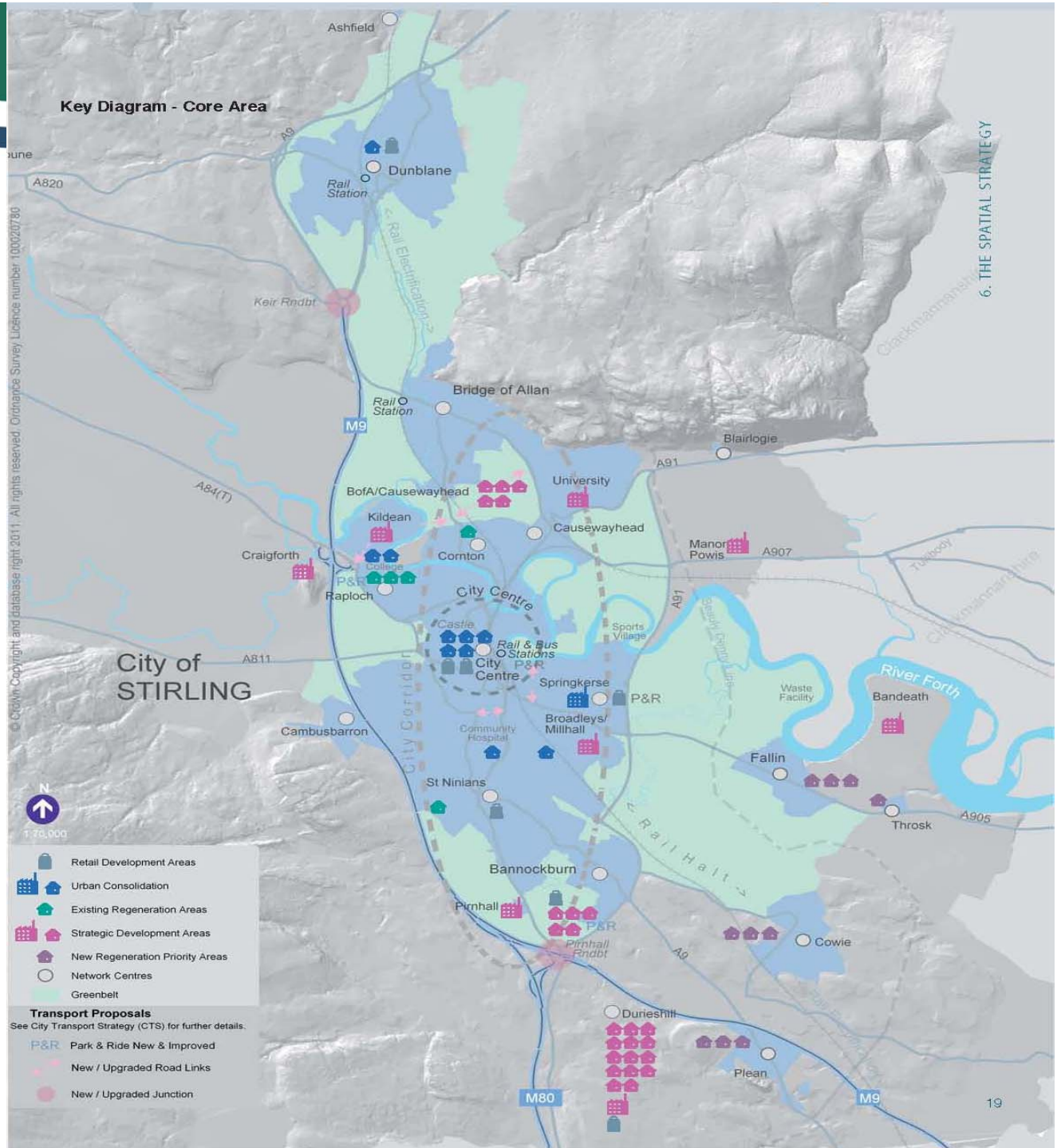
- Housing Need and Demand Assessment identifies need for new housing of different types and tenures to address homelessness, affordability, formation of new households, increased numbers of older people and population growth.
- Provision of new housing growth is more about assisting existing households in housing need to meet their needs locally.
- Scottish Government requires the Council to plan for “generous amounts” of new housing and allocate sufficient land to meet defined needs and targets.

Infrastructure Requirements:

- Roads, transport, schools, drainage, community, health facilities, waste management, play space, green infrastructure, etc.
- New or improved facilities to service new development.
- On and off-site provision.
- Modelling of road network and schools capacity has informed the Spatial Strategy.

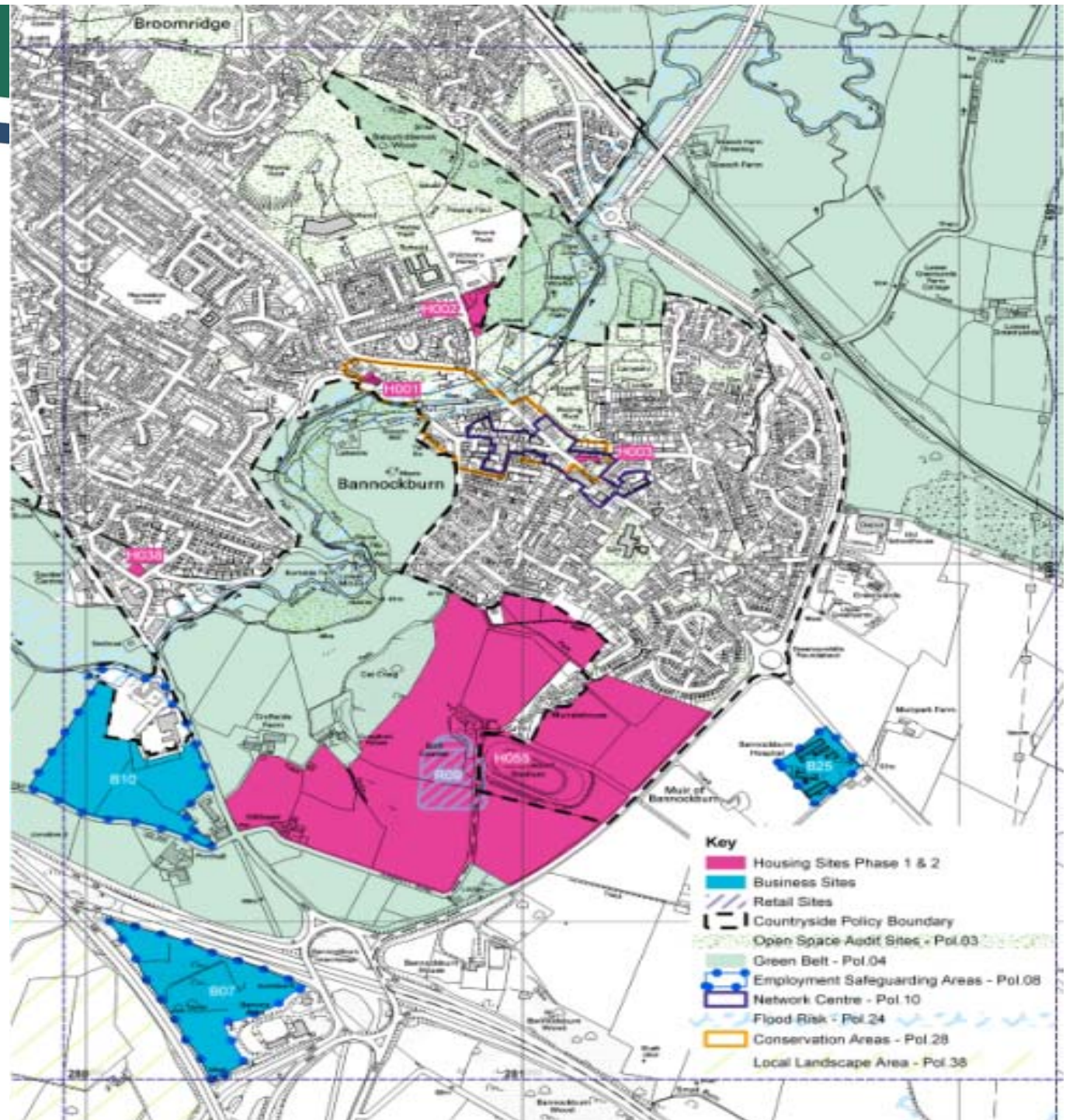


Draft Proposed Local Development Plan: Key Diagram (Core Area)





Draft Proposed Local Development Plan: South Stirling



South Stirling Gateway Development:

- 800 houses (mixed tenure including affordable)
- Primary school
- Superstore
- New road access
- Open spaces
- Park and Ride
- Recreational facilities



Local Development Plan - Next Stages:

2011

- **24 Oct - 16 Dec:** Draft Proposed Plan community consultation – focusing on areas most affected by development proposals.
- **End of December:** Representations on Draft Plan received.

2012

- **March:** Report to Council on responses to Draft Proposed Plan.
- **August:** Report to Council on Proposed Plan.
- **Sept-Oct:** Proposed Plan consultation, neighbour notification.

2013

- **March:** Submit Proposed Plan, Supplementary Guidance and Action Programme to Scottish Government.
- **Mar-Oct:** Examination of Proposed Plan.

2014

- **Jan:** Report to Council on proposed modifications to Plan.
- **Feb:** Adopt Plan.



Local Development Plan - Further Information:

Information and documentation relating to Local Development Plan can be viewed at:

www.stirling.gov.uk/localdevplan