



2011 Census Stirling

New Multi Member Wards

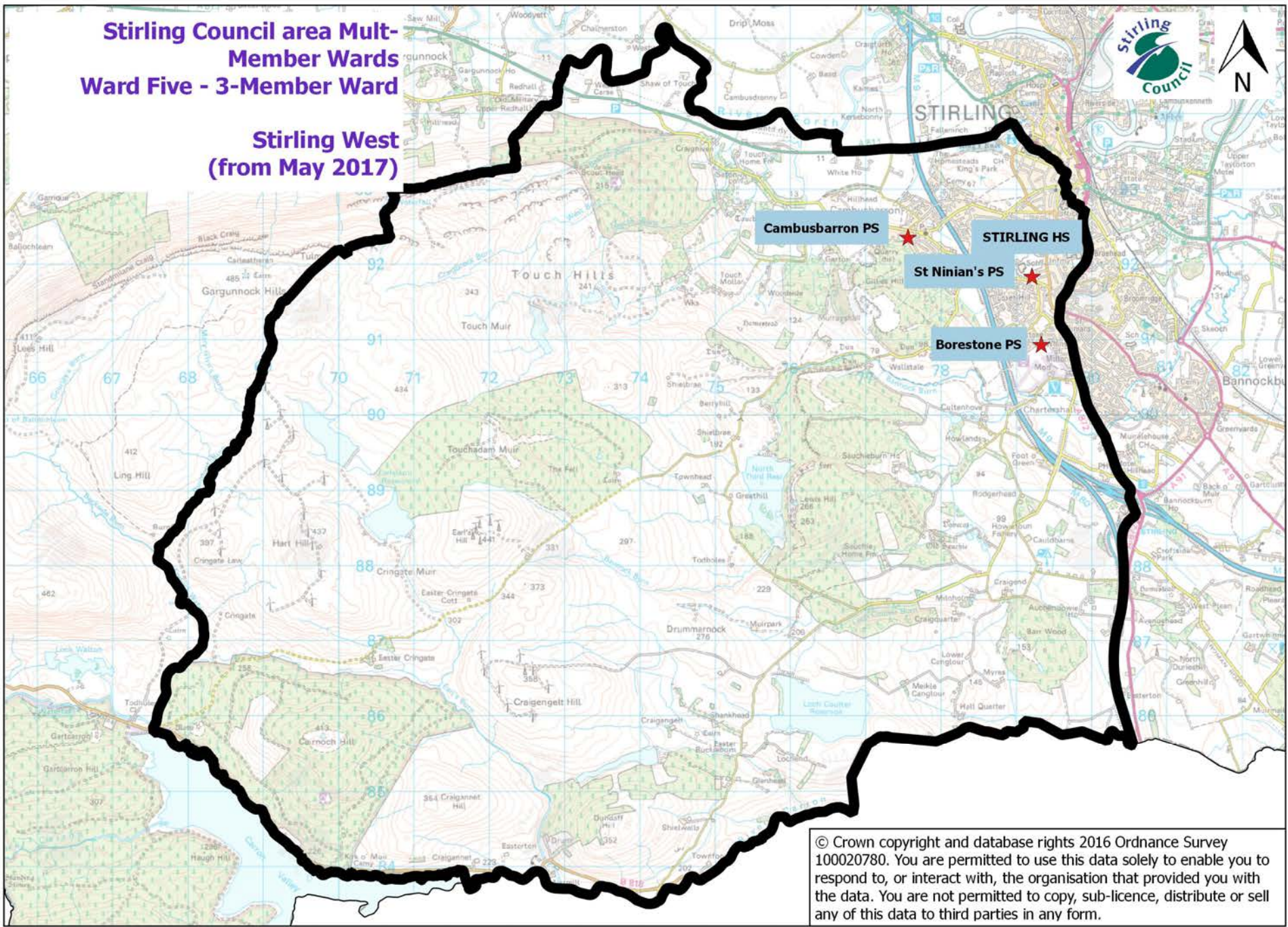
WARD 5
STIRLING WEST,
STIRLING COUNCIL area
and Scotland

Localities Team, Room 1 Old Viewforth, localities@stirling.gov.uk



Stirling Council area Multi-Member Wards
Ward Five - 3-Member Ward

Stirling West
(from May 2017)





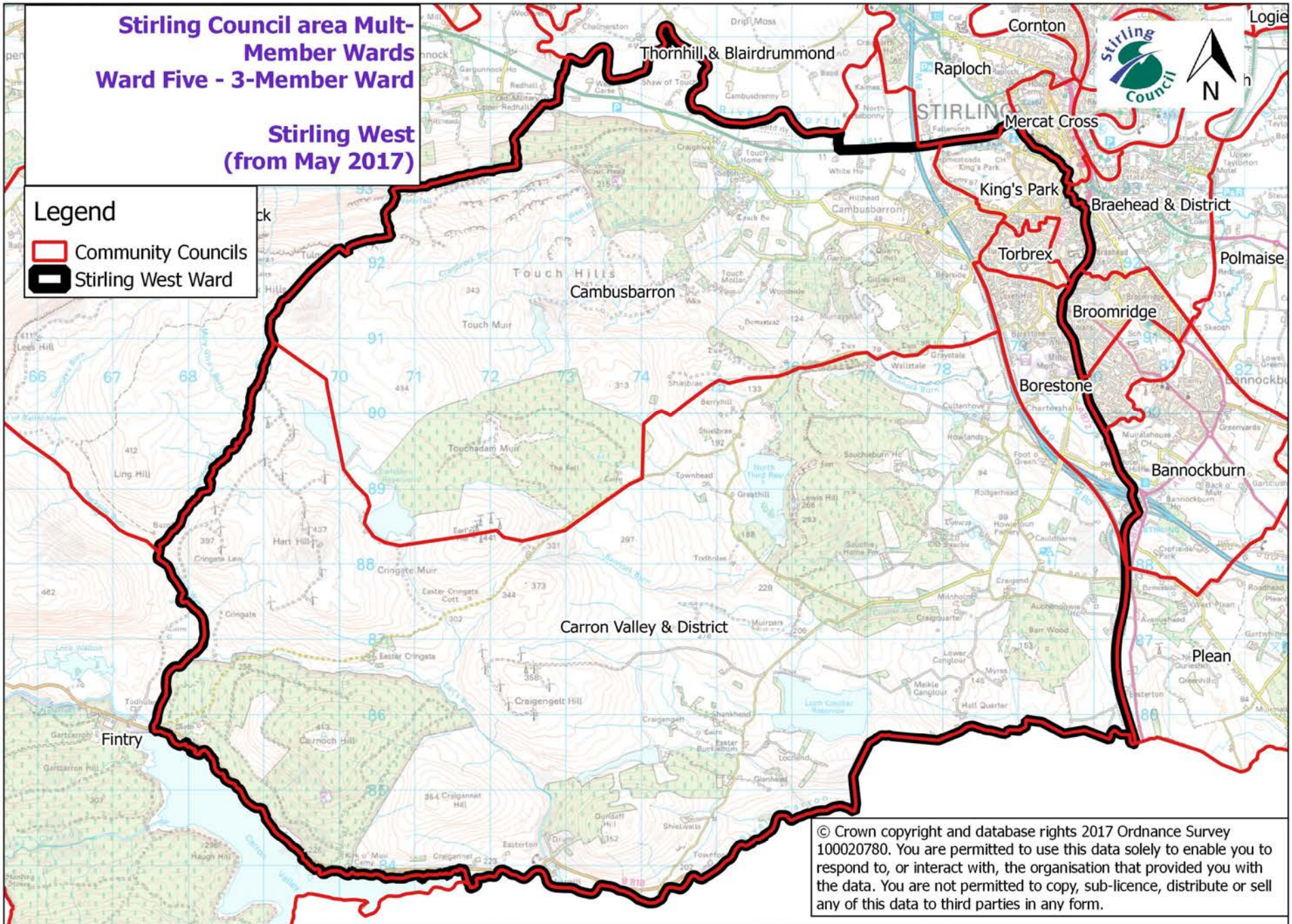
© Crown copyright and database rights 2016 Ordnance Survey 100020780. You are permitted to use this data solely to enable you to respond to, or interact with, the organisation that provided you with the data. You are not permitted to copy, sub-licence, distribute or sell any of this data to third parties in any form.

Stirling Council area Multi-Member Wards
Ward Five - 3-Member Ward

Stirling West
(from May 2017)

Legend

-  Community Councils
-  Stirling West Ward



© Crown copyright and database rights 2017 Ordnance Survey 100020780. You are permitted to use this data solely to enable you to respond to, or interact with, the organisation that provided you with the data. You are not permitted to copy, sub-licence, distribute or sell any of this data to third parties in any form.



2011 Census Profile



1. Key statistics				2. Age structure				3. Household composition			
STIRLING WEST WARD											
Resident population	11,830			0 to 4	630	5.3	4.9	1 person household pensioner	803	15.4	13.0
Males	5,643			5 to 11	877	7.4	7.7	1 person household non-pensioner	826	15.9	17.6
Females	6,187			12 to 15	591	5.0	5.2	1 adult plus children	225	4.3	4.5
Area	102.65km ²			16 to 24	1,167	9.9	14.0	2 adults* or 2 adults 65+, no children	766	14.7	13.4
Persons per square km	115			25 to 44	2,844	24.0	23.7	2 adults plus children	785	15.1	15.7
Occupied households	5,204			45 to 64	3,277	27.7	27.3	2 adults no children	1014	19.5	19.5
2nd residence/ holiday home	30			65 to 84	2,108	17.8	15.1	3 or more adults plus children	222	4.3	4.4
Vacant households	95			85+	336	2.8	2.0	3 or more adults no children	563	10.8	11.8
In communal establishments	134 persons			Total	11,830			<i>* one under 65 and one 65+</i>			
4. Household tenure				5. House type				6. Household size by number of rooms			
	H'holds	%	Stir %		H'holds	%	Stir %		H'holds	%	Stir %
Owner occupied	3,740	71.9	66.2	House or Bungalow				1 room	10	0.2	0.4
Rented from Council	528	10.2	14.8	Detached	1509	28.3	32.2	2 rooms	96	1.8	2.4
Other social rented*	303	5.8	5.1	Semi-detached	1512	28.4	25.1	3 rooms	419	8.1	10.2
Private rented	472	9.1	10.8	Terraced (including end-terrace)	823	15.4	16.4	4 rooms	1212	23.3	23.9
Other private rented	70	1.4	1.4	Flat, Maisonette or Apartment				5 rooms	1301	25.0	24.5
Living rent free	91	1.8	1.7	Purpose built flats/ tenement	1179	22.1	22.6	6 rooms	732	14.1	12.6
Total	5,204			Part of a converted/ shared house	277	5.2	2.8	7 rooms	549	10.5	9.5
				In a commercial building	25	0.5	0.8	8+ rooms	885	17.0	16.5
				Other (including caravan)	4	0.1	0.2				
				Total	5329			Too few rooms per resident	261	5.1	6.8
<i>* Registered Social Landlord, Housing Association, Housing Co-operative, Charitable Trust and non-profit housing company</i>								Average number of rooms per household	5.2		5.4
7. Car availability				8. Travel to work				9. Long-term health condition			
	H'holds	%	Stir %		Persons	%	Stir %		Persons	%	Stir %
H'holds with no cars	1119	21.5	22.3	Train	248	4.7	4.1	All people	11,830		
H'holds with 1 car	2325	44.7	41.6	Bus, minibus or coach	269	5.1	4.9	No condition	8376	70.8	71.8
H'holds with 2 cars	1448	27.8	28.3	Car or van - driving	3180	60.9	60.2	One or more conditions	3454	29.2	28.2
H'holds with 3 cars	225	4.3	5.9	Car or van - passenger	277	5.3	5.4	Deafness or partial hearing loss	894	7.6	6.6
H'holds with 4+ cars	87	1.7	1.8	Motorcycle, scooter or moped	6	0.1	0.2	Blindness or partial sight loss	291	2.5	2.2
All cars or vans in area	6,302			Bicycle	76	1.5	1.1	Learning disability e.g. Down's Syndrome	62	0.5	0.4
				Foot	538	10.3	9.1	Learning difficulty e.g. Dyslexia	211	1.8	2.1
				Other	71	1.4	1.2	Development disorder eg Autistic Spectrum	47	0.4	0.5
				<i>Working mainly at or from home</i>	560	10.7	13.7	Physical disability	713	6.0	6.1
				<i>All people 16-74 in employment the week before Census</i>				Mental health condition	394	3.3	3.7
								Other condition	2149	18.2	17.5

Rooms include kitchens, living rooms, bedrooms, utility rooms & studies. Excludes bathrooms, toilets, halls or landings.

10. Ethnic group/ Religion				11. Economic activity				12. Employment by industry			
	Persons	%	Stir %		Persons	%	Stir %		Persons	%	Stir %
All residents	11,830			All persons 16 to 74	8,480			All persons 16 to 74 in employment	5,466		
White	11,527	97.4	96.8	Economically Active				Agriculture, forestry and fishing	100	1.8	2.5
Asian	210	1.8	2.3	Employed full-time	3,328	39.3	36.7	Administrative and support activities	208	3.8	4.2
African/ Caribbean	24	0.2	0.3	Employed part-time	1,132	13.4	12.6	Manufacturing	345	6.3	6.1
Other/ mixed	69	0.6	0.6	Self-employed	765	9.0	9.3	Construction	445	8.1	8.6
Religion				Unemployed	300	3.5	3.9	Wholesale and retail trade	750	13.7	14.9
Church of Scotland	4,401	37.2	35.0	Full-time student	315	3.7	5.6	Finance and insurance and Real estate	379	6.9	6.0
Roman Catholic	1,465	12.4	12.3	Economically Inactive				Professional, scientific and technical	315	5.8	5.2
Other Christian	709	6.0	6.1	Retired	1,470	17.3	15.1	Public administration and defence	462	8.5	7.0
Other religion	186	1.6	1.7	Student	389	4.6	7.6	Education	606	11.1	10.2
No religion	4,235	35.8	37.8	Looking after home or family	297	3.5	3.3	Health and social work	836	15.3	13.6
Not answered	834	7.0	7.1	Long-term sick or disabled	341	4.0	4.1	Accommodation and food services	316	5.8	8.3
				Other	143	1.7	1.9	Other	704	12.9	13.4
13. Country of Birth				14. Health/ Limiting condition				15. Occupation			
	Persons	%	Stir %		Persons	%	Stir %		Persons	%	Stir %
All residents	11,830			All residents	11,830			All persons 16 to 74 in employment	5,466		
Scotland	9,762	82.5	79.8	Very good health	6,546	55.3	55.8	Managers, directors and senior officials	622	11.4	11.1
England	1,232	10.4	11.7	Good health	3,458	29.2	29.0	Professional occupations	1,331	24.4	20.0
Rest of UK	159	1.3	1.4	Fair health	1,339	11.3	10.8	Associate professional and technical	786	14.4	12.7
Republic of Ireland	48	0.4	0.4	Bad health	378	3.2	3.5	Administrative and secretarial	554	10.1	9.6
EU Accession	105	0.9	1.1	Very bad health	109	0.9	1.0	Skilled trades	530	9.7	11.7
Europe other	127	1.1	1.4	Day to day activities				Caring, leisure and other occupations	427	7.8	8.7
Africa	83	0.7	0.7	Limited a lot	952	8.1	8.1	Sales and customer service	429	7.9	8.8
Middle East and Asia	179	1.5	2.2	Limited a little	1,255	10.6	9.4	Process, plant and machine operatives	294	5.4	6.0
Americas & Caribbean	90	0.8	0.8	Not limited	9,623	81.3	82.5	Elementary occupations	493	9.0	11.5
Other	45	0.4	0.5								
16. Qualifications				17. Provision of unpaid care				18. Approximate Social Grade			
	Persons	%	Stir %		Persons	%	Stir %		Persons	%	Stir %
All residents 16+	9,732			All residents	11,830			All H'hold Reference Persons 16 to 64	3,578		
O Grade, St. Grade	1,941	19.9	20.5	Provides no unpaid care	10,747	90.9	90.8	AB - Higher and intermediate managerial/ administrative/ professional	1,107	30.9	25.8
Highers, ONC SVQ 3	1,338	13.8	16.2	Provides 1-19 hours per week	718	6.1	5.5	C1 - Supervisory, clerical, junior managerial/ administrative/ professional	1,127	31.5	31.4
HND, HNC, SVQ 4	832	8.6	8.7	Provides 20-34 hours per week	88	0.7	0.8	C2 - Skilled manual workers	636	17.8	19.9
First/ Higher degree, professional qual.	3,648	37.5	33.3	Provides 35-49 hours per week	64	0.5	0.7	DE - Semi-skilled, unskilled manual; on benefits, unemployed, lowest grade	708	19.8	22.9
No qualifications	1,973	20.3	21.3	Provides 50 or more hours/ week	213	1.8	2.2				

Stirling Council area and Scotland

1. Key statistics				2. Age structure				3. Household composition			
Stirling Council area					Persons	%	Scot %		H'holds	%	Scot %
Resident population	90,247			0 to 4	4,415	4.9	5.5	1 person household pensioner	4,899	13.0	13.1
Males	43,240			5 to 11	6,914	7.7	7.2	1 person household non-pensioner	6,606	17.6	21.6
Females	47,007			12 to 15	4,686	5.2	4.6	1 adult plus children	1,698	4.5	5.3
Area	2,196km ²			16 to 24	12,638	14.0	11.9	2 adults* or 2 adults 65+, no children	5,051	13.4	11.7
Persons per square km	41			25 to 44	21,408	23.7	26.5	2 adults plus children	5,907	15.7	14.0
Occupied households	37,566			45 to 64	24,653	27.3	27.5	2 adults no children	7,307	19.5	19.2
2nd residence/ holiday home	555			65 to 84	13,702	15.1	14.8	3 or more adults plus children	1,663	4.4	4.1
Vacant households	852			85+	1,831	2.0	2.0	3 or more adults no children	4,435	11.8	10.9
In Communal Establishments	3,932 persons			Total	90,247			<i>* one under 65 and one 65+</i>			
4. Household tenure				5. House type				6. Household size by number of rooms			
	H'holds	%	Scot %		H'holds	%	Scot %		H'holds	%	Scot %
Owner occupied	24,878	66.2	62.0	House or Bungalow				1 room	159	0.4	0.6
Rented from Council	5,559	14.8	13.2	Detached	12,537	32.2	22.1	2 rooms	887	2.4	3.5
Other social rented*	1,910	5.1	11.1	Semi-detached	9,761	25.1	22.4	3 rooms	3,817	10.2	13.5
Private rented	4,060	10.8	11.1	Terraced (incl. end-terrace)	6,385	16.4	18.6	4 rooms	8,994	23.9	29.2
Other private rented	531	1.4	1.3	Flat, Maisonette or Apartment				5 rooms	9,201	24.5	24.3
Living rent free	628	1.7	1.3	Purpose built flats/ tenement	8,806	22.6	34.4	6 rooms	4,746	12.6	12.2
Total	37,566			Part of converted/shared house	1,090	2.8	1.8	7 rooms	3,555	9.5	7.1
<i>* Registered Social Landlord, Housing Association, Housing Co-operative, Charitable Trust and non-profit housing company</i>				In a commercial building	310	0.8	0.5	8+ rooms	6,207	16.5	9.6
				Other (incl. caravan)	84	0.2	0.2	Too few rooms per resident	2,569	6.8	9.0
				Total	38,973			<i>Average number of rooms per household</i>		5.4	4.9
7. Car availability				8. Travel to work				9. Long-term health condition			
	H'holds	%	Scot %		Persons	%	Scot %		Persons	%	Scot %
Households with no car	8,372	22.3	30.5	Train	1,616	4.1	3.7	All people	90,247		
Households with 1 car	15,642	41.6	42.3	Bus, minibus or coach	1,942	4.9	10.0	No condition	64,779	71.8	70.1
Households with 2 cars	10,630	28.3	21.6	Car or van - driving	23,688	60.2	56.0	One or more conditions	25,468	28.2	29.9
Households with 3 cars	2,230	5.9	4.3	Car or van - passenger	2,137	5.4	5.8	Deafness or partial hearing loss	5,965	6.6	6.6
Households with 4+ car	692	1.8	1.3	Motorcycle, scooter or moped	60	0.2	0.3	Blindness or partial sight loss	1,965	2.2	2.4
All cars or vans in area	46,728			Bicycle	446	1.1	1.4	Learning disability (e.g. Down's Syndrome)	395	0.4	0.5
				Foot	3,581	9.1	9.9	Learning difficulty (e.g. Dyslexia)	1,882	2.1	2.0
				Other	491	1.2	2.0	Development disorder (eg Autistic Spectrum)	443	0.5	0.6
				<i>Working mainly at/ from home</i>	5,406	13.7	10.8	Physical disability	5,535	6.1	6.7
				<i>All people 16-74 in employment week before Census</i>				Mental health condition	3,319	3.7	4.4
								Other condition	15,763	17.5	18.7

10. Ethnic group/ Religion				11. Economic activity				12. Employment by industry			
	Persons	%	Scot %		Persons	%	Scot %		Persons	%	Scot %
All residents	90,247			All persons 16 to 74	67,240			All persons 16 to 74 in employment	42,171		
White	87,390	96.8	96.0	Economically Active				Agriculture, forestry and fishing	1,056	2.5	2.0
Asian	2,062	2.3	2.7	Employed full-time	24,664	36.7	39.6	Administrative and support activities	1,779	4.2	4.3
African/ Caribbean	262	0.3	0.7	Employed part-time	8,463	12.6	13.4	Manufacturing	2,569	6.1	7.7
Other/ mixed	533	0.6	0.6	Self-employed	6,240	9.3	7.5	Construction	3,633	8.6	8.0
Religion				Unemployed	2,596	3.9	4.8	Wholesale and retail trade	6,277	14.9	15.0
Church of Scotland	31,552	35.0	32.4	Full-time student	3,768	5.6	3.7	Finance and insurance and Real estate	2,517	6.0	5.7
Roman Catholic	11,140	12.3	15.9	Economically Inactive				Professional, scientific and technical	2,206	5.2	5.2
Other Christian	5,511	6.1	5.5	Retired	10,141	15.1	14.9	Public administration and defence	2,957	7.0	7.0
Other Religion	1,493	1.7	2.6	Student	5,108	7.6	5.5	Education	4,304	10.2	8.4
No religion	34,152	37.8	36.7	Looking after home or family	2,197	3.3	3.6	Health and social work	5,750	13.6	15.0
Not answered	6,399	7.1	7.0	Long-term sick or disabled	2,788	4.1	5.1	Accommodation and food services	3,500	8.3	6.3
				Other	1,275	1.9	1.9	Other	5,623	13.4	15.4
13. Country of birth				14. Health/ Limiting condition				15. Occupation			
	Persons	%	Scot %		Persons	%	Scot %		Persons	%	Scot %
All residents	90,247			All residents	90,247			All persons 16 to 74 in employment	42,171		
Scotland	71,994	79.8	83.3	Very good health	50,341	55.8	52.5	Managers, directors and senior officials	4,669	11.1	8.4
England	10,588	11.7	8.7	Good health	26,124	29.0	29.7	Professional occupations	8,434	20.0	16.8
Rest of UK	1,261	1.4	1.0	Fair health	9,709	10.8	12.2	Associate professional and technical	5,361	12.7	12.7
Republic of Ireland	360	0.4	0.4	Bad health	3,131	3.5	4.3	Administrative and secretarial occupations	4,047	9.6	11.4
EU Accession	975	1.1	1.4	Very bad health	942	1.0	1.3	Skilled trades	4,932	11.7	12.5
Europe other	1,430	1.6	1.3	Day to day activities				Caring, leisure and other occupations	3,654	8.7	9.7
Africa	606	0.7	0.9	Limited a lot	7,341	8.1	9.6	Sales and customer service occupations	3,690	8.8	9.3
Middle East and Asia	1,954	2.2	2.0	Limited a little	8,482	9.4	10.1	Process, plant and machine operatives	2,533	6.0	7.7
Americas and Caribbean	754	0.8	0.6	Not limited	74,424	82.5	80.3	Elementary occupations	4,851	11.5	11.6
Other	325	0.4	0.3								
16. Qualifications				17. Provision of unpaid care				18. Approximate Social Grade			
	Persons	%	Scot %		Persons	%	Scot %		Persons	%	Scot %
All residents 16+	74,232			All residents	90,247			All Household Reference Persons 16 to 64	27,259		
O Grade, St. Grade	15,179	20.5	23.1	Provides no unpaid care	81,982	90.8	90.7	AB - Higher and intermediate managerial/ administrative/ professional	7,027	25.8	18.6
Highers, ONC SVQ 3	12,035	16.2	14.3	Provides 1-19 hours per week	4,909	5.5	5.2	C1 - Supervisory, clerical, junior managerial/ administrative/ professional	8,569	31.4	31.7
HND, HNC, SVQ 4	6,479	8.7	9.7	Provides 20-34 hours per week	742	0.8	0.9	C2 - Skilled manual workers	5,424	19.9	21.9
First/ Higher degree, professional qual.	24,721	33.3	26.1	Provides 35-49 hours per week	623	0.7	0.8	DE - Semi-skilled, unskilled manual; on state benefits, unemployed, lowest grade workers	6,239	22.9	27.8
No qualifications	15,818	21.3	26.8	Provides 50 or more hrs/ week	1,991	2.2	2.5				

Definitions

Note: In order to protect against disclosure of personal information, some Census records are swapped between different geographic areas. Some values will be affected, particularly small values at the most detailed geographies.

1. Key Statistics – *Household*: is one person living alone; or a group of people (not necessarily related) living at the same address who share cooking facilities and share a living room or sitting room or dining area. A *communal establishment* is defined as an establishment providing managed residential accommodation. Managed means full-time or part-time supervision of the accommodation for example, prisons, large hospitals, hotels, student halls of residence.

2. Age structure – Age is derived from the date of birth question and is a person's age on 27th March 2011. Dates of birth that imply an age over 115 were treated as invalid. Infants less than one year old were classed as being 0 years of age. Individual years and gender breakdown for Community Council areas are available on request.

3. Household composition – The figure for '1 adult plus children' may include a small number of households with no adults.

4. Household tenure – Tenure provides information about whether a household rents or owns the accommodation that it occupies and, if rented, combines this with information about the type of landlord who owns or manages the accommodation. *Owner occupied*: covers owned outright, owned with mortgage or loan and shared ownership, part owned and part rented. *Private rented*: includes rented from a private landlord or letting agency, employer of a household member, relative or friend of a household member, or other non-Social rented.

5. House type – *Terraced*: covers end-terrace. *Part of a converted or shared house*: includes bed-sits. *Other*: includes caravan or other mobile temporary structure.

6. Household size by number or rooms – Occupancy rating provides a measure of whether a household's accommodation is overcrowded (too few rooms per resident) or under-occupied. It compares the actual number of rooms available to a household and a notional measure of the number of rooms required given the number, age and relationships of the people in the household.

7. Car availability – The number of cars or vans owned, or available for use, by one or more members of a household. It includes company cars and vans available for private use.

8. Travel to work – Method of travel to work is defined as the method used for the longest part, by distance, of usual journey.

9. Long-term health condition – lasted or expected to last at least 12 months.

10. Ethnic composition/ Religion – *Ethnic group* classifies people according to their own perceived ethnic group and cultural background. *Religion* is a person's current religious denomination or body that they belong to. No determination is made about whether a person was a practising member of a religion

11. Economic activity – relates to whether or not a person aged 16 and over was working or looking for work in the week before the census. Rather than a simple indicator of whether or not someone was currently in employment, it provides a measure of whether or not a person was an active participant in the labour market.

12. Employment by industry – The industry in which a person works relates to their main job and is derived from information provided on the main activity of their employer or business.

13. Country of birth – The grouping of countries within the classification is broadly regional, but takes into account the grouping of European Union (EU) countries. Countries in the EU are grouped into those that were EU members in March 2001, and those that became members (accession countries) between April 2001 and March 2011 as part of the EU enlargement process.

14. Health/ Limiting condition – *General health* is a self-assessment of a person's general state of health. People were asked to assess whether their health was very good, good, fair, bad or very bad. This assessment is not based on a person's health based over any specified period of time. *Limiting condition* – is defined as day to day activities being limited because of a health problem or disability which has lasted, or is expected to last, at least 12 months. This includes problems that are related to old age. People were asked to assess whether their daily activities were limited a lot or a little by such a health problem, or whether their daily activities were not limited at all.

15. Occupation – A person's occupation relates to their main job and is derived from either their job title or details of the activities involved in their job.

16. Qualifications – Highest level of qualification achieved. *Level 1*: 0 Grade, Standard Grade, Access 3 Cluster, Intermediate 1 or 2, GCSE, CSE, Senior Certification or equivalent; GSVQ Foundation or Intermediate, SVQ level 1 or 2, SCOTVEC Module, City and Guilds Craft or equivalent. *Level 2*: SCE Higher Grade, Higher, Advanced Higher, CSYS, A Level, AS Level, Advanced Senior Certificate or equivalent; GSVQ Advanced, SVQ level 3, ONC, OND, SCOTVEC National Diploma, City and Guilds Advanced Craft or equivalent. *Level 3*: HNC, HND, SVQ level 4 or equivalent. *Level 4*: and above: Degree, Postgraduate qualifications, Masters, PhD, SVQ level 5 or equivalent; Professional qualifications (for example, teaching, nursing, accountancy).

17. Provision of unpaid care – A person is a provider of unpaid care if they look after or give help or support to family members, friends, neighbours because of long-term physical or mental ill health or disability, or problems related to old age. This does not include any activities as part of paid employment. No distinction is made about whether any care that a person provides is within their own household or outside the household, so no explicit link can be made about whether the care provided is for a person within the household who has poor general health or a long-term health problem or disability.

18. Approximate Social Grade – Social grade is the socio-economic classification used by the Market Research and Marketing Industries, most often in the analysis of spending habits and consumer attitudes. The Market Research Society (https://www.mrs.org.uk/cgg/social_grade) has developed a method for using census information to provide a good approximation of social grade. The concept of a *Household Reference Person* (HRP) was introduced to replace the traditional concept of the 'head of the household'. HRPs provide an individual person within a household to act as a reference point for producing further derived statistics and for characterising a whole household according to characteristics of the chosen reference person.

For further information about Localities Census statistics contact the Localities Team, Stirling Council, Room 1 Old Viewforth, Stirling FK8 2ET, email: localities@stirling.gov.uk