



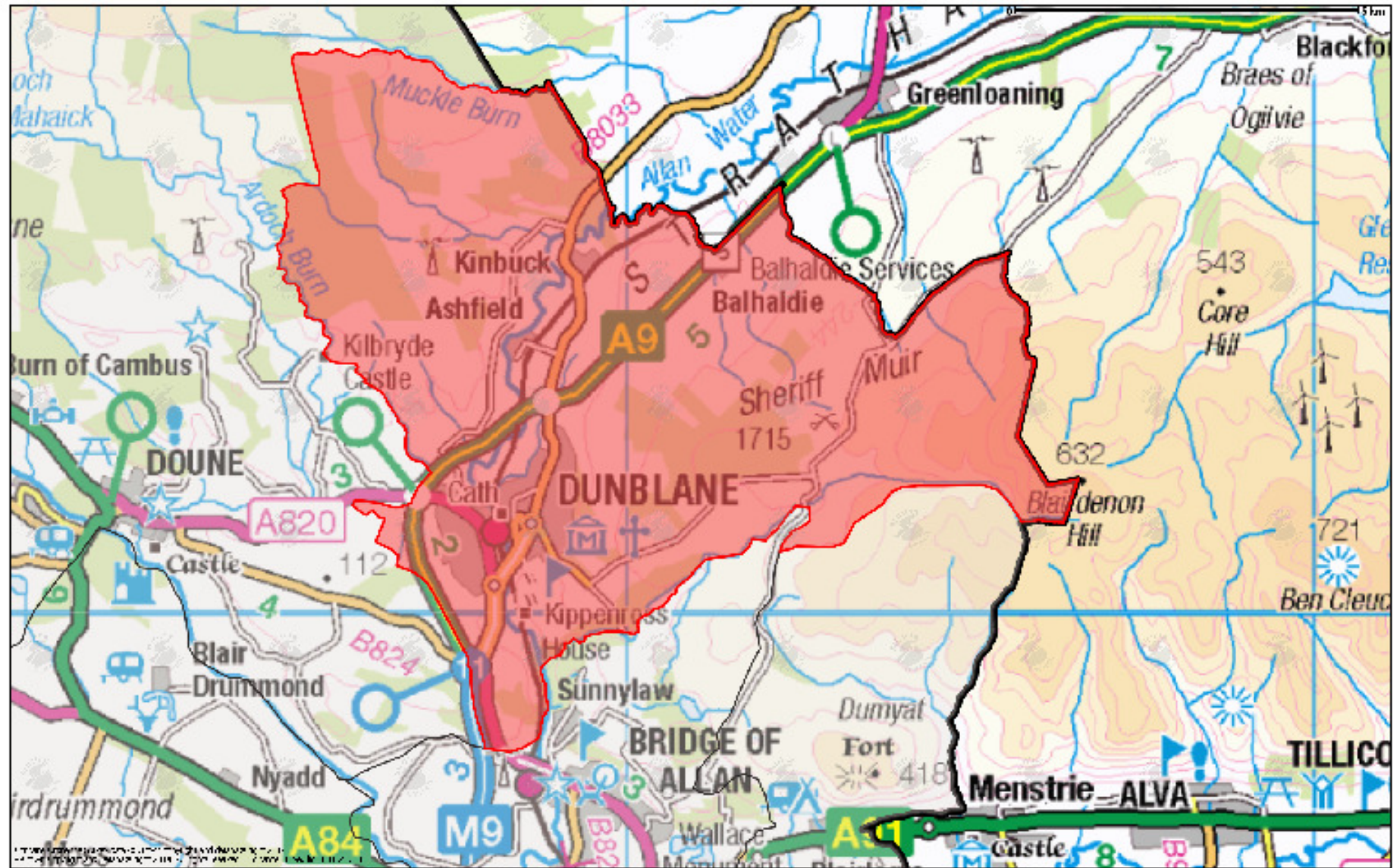
# 2011 Census Stirling

Community Council Area Profiles

## Dunblane, Stirling Council area and Scotland

[stirling.gov.uk](http://stirling.gov.uk) phone 0845 277 7000 text 07717 990 001 minicom 01786 464599





©Crown Copyright and Database right 2014. All rights reserved. Ordnance Survey lic. 100020780

Performance Team

Scale 1:7500



Dunblane Community Council area



1. Key statistics				2. Age structure				3. Household composition			
<b>Dunblane Community Council area</b>											
Resident population	9,394			0 to 4	465	4.9	4.9	1 person household pensioner	529	14.2	13.0
Males	4,494			5 to 11	959	10.2	7.7	1 person household non-pensioner	485	13.0	17.6
Females	4,900			12 to 15	762	8.1	5.2	1 adult plus children	101	2.7	4.5
Area	57 km <sup>2</sup>			16 to 24	793	8.4	14.0	2 adults* or 2 adults 65+, no children	571	15.3	13.4
Persons per square km	165			25 to 44	1,959	20.9	23.7	2 adults plus children	803	21.6	15.7
Occupied households	3,724			45 to 64	2,779	29.6	27.3	2 adults no children	674	18.1	19.5
2nd residence/ holiday home	17			65 to 84	1,498	15.9	15.1	3 or more adults plus children	188	5.0	4.4
Vacant households	83			85+	179	1.9	2.0	3 or more adults no children	373	10.0	11.8
In communal establishments	335 persons			Total	9,394			<i>* one under 65 and one 65+</i>			
4. Household tenure				5. House type				6. Household size by number of rooms			
	H'holds	%	Stir %		H'holds	%	Stir %		H'holds	%	Stir %
Owner occupied	3,083	82.8	66.2	<b>House or Bungalow</b>				1 room	8	0.2	0.4
Rented from Council	232	6.2	14.8	Detached	1,877	49.1	32.2	2 rooms	51	1.4	2.4
Other social rented*	36	1.0	5.1	Semi-detached	745	19.5	25.1	3 rooms	331	8.9	10.2
Private rented	264	7.1	10.8	Terrace	435	11.4	16.4	4 rooms	648	17.4	23.9
Other private rented	55	1.5	1.4	<b>Flat, Maisonette or Apartment</b>				5 rooms	554	14.9	24.5
Living rent free	54	1.5	1.7	Purpose built flat/ tenement	666	17.4	22.6	6 rooms	512	13.7	12.6
Total	3,724			Part of a converted/ shared house	66	1.7	2.8	7 rooms	474	12.7	9.5
<i>* Registered Social Landlord, Housing Association, Housing Co-operative, Charitable Trust and non-profit housing company</i>				In a commercial building	35	0.9	0.8	8+ rooms	1,146	30.8	16.5
				Other (incl. caravan)	0	0.0	0.2	Too few rooms per resident	126	3.4	6.8
				Total	3,824			<i>Average number of rooms per household</i>			
									6.1		5.4
7. Car availability				8. Travel to work				9. Long-term health condition			
	H'holds	%	Stir %		Persons	%	Stir %		Persons	%	Stir %
Households with no cars	516	13.9	22.3	Train	377	9.2	4.1	<b>All people</b>	9,394		
Households with 1 car	1,472	39.5	41.6	Bus, minibus or coach	70	1.7	4.9	No condition	6,888	73.3	71.8
Households with 2 cars	1,416	38.0	28.3	Car or van - driving	2,628	64.1	60.2	One or more conditions	2,506	26.7	28.2
Households with 3 cars	259	7.0	5.9	Car or van - passenger	142	3.5	5.4	Deafness or partial hearing loss	585	6.2	6.6
Households with 4+ cars	61	1.6	1.8	Motorcycle, scooter or moped	2	0.0	0.2	Blindness or partial sight loss	176	1.9	2.2
All cars or vans in area	5,344			Bicycle	38	0.9	1.1	Learning disability (eg Down's Syndrome)	36	0.4	0.4
				Foot	288	7.0	9.1	Learning difficulty (eg Dyslexia)	195	2.1	2.1
				Other	52	1.3	1.2	Development disorder (eg Autistic Spectrum)	45	0.5	0.5
				<i>Working at home</i>	503	12.3	13.7	Physical disability	408	4.3	6.1
								Mental health condition	204	2.2	3.7
				<i>All people 16-74 in employment the week before Census</i>				Other condition	1,686	17.9	17.5

10. Ethnic group/ Religion				11. Economic activity				12. Employment by industry			
	Persons	%	Stir %		Persons	%	Stir %		Persons	%	Stir %
<b>All residents</b>	9,394			<b>All persons 16 to 74</b>	4,478			<b>All persons 16 to 74 in employment</b>	4,232		
White	9,240	98.4	96.8	<b>Economically Active</b>				Agriculture, Forestry and Fishing	47	1.1	2.5
Asian	78	0.8	2.3	Employed full-time	2,603	40.2	36.7	Administrative and Support activities	127	3.0	4.2
African/ Caribbean	6	0.1	0.3	Employed part-time	855	13.2	12.6	Manufacturing	247	5.8	6.1
Other/ mixed	70	0.7	0.6	Self-employed	642	9.9	9.3	Construction	252	6.0	8.6
<b>Religion</b>				Unemployed	175	2.7	3.9	Wholesale and Retail trade	479	11.3	14.9
Church of Scotland	3,474	37.0	35.0	Full-time student	168	2.6	5.6	Finance & Insurance & Real estate	367	8.7	6.0
Roman Catholic	959	10.2	12.3	<b>Economically Inactive</b>				Professional, Scientific & Technical	305	7.2	5.2
Other Christian	808	8.6	6.1	Retired	1,223	18.9	15.1	Public administration and Defence	317	7.5	7.0
Other religion	107	1.1	1.7	Student	339	5.2	7.6	Education	611	14.4	10.2
No religion	3,343	35.6	37.8	Looking after home or family	253	3.9	3.3	Health and Social Work	623	14.7	13.6
Not answered	703	7.5	7.1	Long-term sick or disabled	163	2.5	4.1	Accommodation and Food services	256	6.0	8.3
				Other	57	0.9	1.9	Other	601	14.2	13.4
13. Country of birth				14. Health/ Limiting condition				15. Occupation			
	Persons	%	Stir %		Persons	%	Stir %		Persons	%	Stir %
<b>All residents</b>	9,394			<b>All residents</b>	9,394			<b>All persons 16 to 74 in employment</b>	4,232		
Scotland	7,071	75.3	79.8	Very good health	5,931	63.1	55.8	Managers, directors & senior officials	637	15.1	11.1
England	1,638	17.4	11.7	Good health	2,441	26.0	29.0	Professional occupations	1,294	30.6	20.0
Rest of UK	160	1.7	1.4	Fair health	749	8.0	10.8	Associate professional & technical	649	15.3	12.7
Republic of Ireland	41	0.4	0.4	Bad health	203	2.2	3.5	Administrative & secretarial occupations	397	9.4	9.6
EU Accession	23	0.2	1.1	Very bad health	70	0.7	1.0	Skilled trades	318	7.5	11.7
Europe other	160	1.7	1.6	<b>Day to day activities</b>				Caring, leisure and other occupations	302	7.1	8.7
Africa	54	0.6	0.7	Limited a lot	521	5.5	8.1	Sales and customer service occupations	217	5.1	8.8
Middle East and Asia	123	1.3	2.2	Limited a little	847	9.0	9.4	Process, plant and machine operatives	142	3.4	6.0
Americas/ Caribbean	74	0.8	0.8	Not limited	8,026	85.4	82.5	Elementary occupations	278	6.6	11.5
Other	50	0.5	0.4								
16. Qualifications				17. Provision of unpaid care				18. Approximate Social Grade			
	Persons	%	Stir %		Persons	%	Stir %		Persons	%	Stir %
<b>All residents 16+</b>	7,208			<b>All residents</b>	9,394			<b>All Household Reference Persons 16 to 64</b>	2,602		
O Grade, St. Grade	1,113	15.4	20.5	Provides no unpaid care	8,581	91.3	90.8	<b>AB</b> - Higher & intermediate managerial/ administrative/ professional	1,198	46.0	25.8
Highers, ONC SVQ 3	977	13.6	16.2	Provides 1 - 19 hours per week	568	6.0	5.5	<b>C1</b> - Supervisory, clerical, junior managerial/ administrative/ professional	743	28.6	31.4
HND, HNC, SVQ 4	597	8.3	8.7	Provides 20 - 34 hours per week	65	0.7	0.8	<b>C2</b> - Skilled manual workers	345	13.3	19.9
First/ Higher degree, professional qual.	3,547	49.2	33.3	Provides 35 - 49 hours per week	35	0.4	0.7	<b>DE</b> - Semi-skilled, unskilled manual; on benefits, unemployed, lowest grade	316	12.1	22.9
No qualifications	974	13.5	21.3	Provides 50 or more hrs/ week	145	1.5	2.2				

## Stirling Council area and Scotland

1. Key statistics				2. Age structure				3. Household composition						
<b>Stirling Council area</b>														
Resident population	90,247			Persons	%	Scot %				H'holds	%	Scot %		
Males	43,240			0 to 4	4,415	4.9	5.5	1 person household pensioner	4,899	13.0	13.1			
Females	47,007			5 to 11	6,914	7.7	7.2	1 person household non-pensioner	6,606	17.6	21.6			
Area	2,196km <sup>2</sup>			12 to 15	4,686	5.2	4.6	1 adult plus children	1,698	4.5	5.3			
Persons per square km	41			16 to 24	12,638	14.0	11.9	2 adults* or 2 adults 65+, no children	5,051	13.4	11.7			
Occupied households	37,566			25 to 44	21,408	23.7	26.5	2 adults plus children	5,907	15.7	14.0			
2nd residence/ holiday home	555			45 to 64	24,653	27.3	27.5	2 adults no children	7,307	19.5	19.2			
Vacant households	852			65 to 84	13,702	15.1	14.8	3 or more adults plus children	1,663	4.4	4.1			
In Communal Establishments	3,932 persons			85+	1,831	2.0	2.0	3 or more adults no children	4,435	11.8	10.9			
				Total	90,247			* one under 65 and one 65+						
4. Household tenure				5. House type				6. Household size by number of rooms						
	H'holds	%	Scot %		H'holds	%	Scot %		H'holds	%	Scot %			
Owner occupied	24,878	66.2	62.0	<b>House or Bungalow</b>				1 room	159	0.4	0.6			
Rented from Council	5,559	14.8	13.2	Detached	12,537	32.2	22.1	2 rooms	887	2.4	3.5			
Other social rented*	1,910	5.1	11.1	Semi-detached	9,761	25.1	22.4	3 rooms	3,817	10.2	13.5			
Private rented	4,060	10.8	11.1	Terraced (including end-terrace)	6,385	16.4	18.6	4 rooms	8,994	23.9	29.2			
Other private rented	531	1.4	1.3	<b>Flat, Maisonette or Apartment</b>				5 rooms	9,201	24.5	24.3			
Living rent free	628	1.7	1.3	Purpose built flats/ tenement	8,806	22.6	34.4	6 rooms	4,746	12.6	12.2			
Total	37,566			Part of a converted/ shared house	1,090	2.8	1.8	7 rooms	3,555	9.5	7.1			
* Registered Social Landlord, Housing Association, Housing Co-operative, Charitable Trust and non-profit housing company				In a commercial building	310	0.8	0.5	8+ rooms	6,207	16.5	9.6			
				Other (incl. caravan)	84	0.2	0.2	Too few rooms per resident	2,569	6.8	9.0			
				Total	38,973			Average number of rooms per household		5.4	4.9			
7. Car availability				8. Travel to work				9. Long-term health condition						
	H'holds	%	Scot %		Persons	%	Scot %		Persons	%	Scot %			
Households with no cars	8,372	22.3	30.5	Train	1,616	4.1	3.7	<b>All people</b>	90,247					
Households with 1 car	15,642	41.6	42.3	Bus, minibus or coach	1,942	4.9	10.0	No condition	64,779	71.8	70.1			
Households with 2 cars	10,630	28.3	21.6	Car or van - driving	23,688	60.2	56.0	One or more conditions	25,468	28.2	29.9			
Households with 3 cars	2,230	5.9	4.3	Car or van - passenger	2,137	5.4	5.8	Deafness or partial hearing loss	5,965	6.6	6.6			
Households with 4+ cars	692	1.8	1.3	Motorcycle, scooter or moped	60	0.2	0.3	Blindness or partial sight loss	1,965	2.2	2.4			
All cars or vans in area	46,728			Bicycle	446	1.1	1.4	Learning disability (e.g. Down's Syndrome)	395	0.4	0.5			
				Foot	3,581	9.1	9.9	Learning difficulty (e.g. Dyslexia)	1,882	2.1	2.0			
				Other	491	1.2	2.0	Development disorder (e.g. Autistic Spectrum)	443	0.5	0.6			
				Working mainly at or from home			5,406	13.7	10.8	Physical disability	5,535	6.1	6.7	
				All people 16-74 in employment the week before Census							Mental health condition	3,319	3.7	4.4
									Other condition	15,763	17.5	18.7		

10. Ethnic group/ Religion				11. Economic activity				12. Employment by industry			
	Persons	%	Scot %		Persons	%	Scot %		Persons	%	Scot %
<b>All residents</b>	90,247			<b>All persons 16 to 74</b>	67,240			<b>All persons 16 to 74 in employment</b>	42,171		
White	87,390	96.8	96.0	<b>Economically Active</b>				Agriculture, forestry and fishing	1,056	2.5	2.0
Asian	2,062	2.3	2.7	Employed full-time	24,664	36.7	39.6	Administrative and support activities	1,779	4.2	4.3
African/ Caribbean	262	0.3	0.7	Employed part-time	8,463	12.6	13.4	Manufacturing	2,569	6.1	7.7
Other/ mixed	533	0.6	0.6	Self-employed	6,240	9.3	7.5	Construction	3,633	8.6	8.0
<b>Religion</b>				Unemployed	2,596	3.9	4.8	Wholesale and retail trade	6,277	14.9	15.0
Church of Scotland	31,552	35.0	32.4	Full-time student	3,768	5.6	3.7	Finance and insurance and Real estate	2,517	6.0	5.7
Roman Catholic	11,140	12.3	15.9	<b>Economically Inactive</b>				Professional, scientific and technical	2,206	5.2	5.2
Other Christian	5,511	6.1	5.5	Retired	10,141	15.1	14.9	Public administration and defence	2,957	7.0	7.0
Other Religion	1,493	1.7	2.6	Student	5,108	7.6	5.5	Education	4,304	10.2	8.4
No religion	34,152	37.8	36.7	Looking after home or family	2,197	3.3	3.6	Health and social work	5,750	13.6	15.0
Not answered	6,399	7.1	7.0	Long-term sick or disabled	2,788	4.1	5.1	Accommodation and food services	3,500	8.3	6.3
				Other	1,275	1.9	1.9	Other	5,623	13.4	15.4
13. Country of birth				14. Health/ Limiting condition				15. Occupation			
	Persons	%	Scot %		Persons	%	Scot %		Persons	%	Scot %
<b>All residents</b>	90,247			<b>All residents</b>	90,247			<b>All persons 16 to 74 in employment</b>	42,171		
Scotland	71,994	79.8	83.3	Very good health	50,341	55.8	52.5	Managers, directors and senior officials	4,669	11.1	8.4
England	10,588	11.7	8.7	Good health	26,124	29.0	29.7	Professional occupations	8,434	20.0	16.8
Rest of UK	1,261	1.4	1.0	Fair health	9,709	10.8	12.2	Associate professional and technical	5,361	12.7	12.7
Republic of Ireland	360	0.4	0.4	Bad health	3,131	3.5	4.3	Administrative and secretarial occupations	4,047	9.6	11.4
EU Accession	975	1.1	1.4	Very bad health	942	1.0	1.3	Skilled trades	4,932	11.7	12.5
Europe other	1,430	1.6	1.3	<b>Day to day activities</b>				Caring, leisure and other occupations	3,654	8.7	9.7
Africa	606	0.7	0.9	Limited a lot	7,341	8.1	9.6	Sales and customer service occupations	3,690	8.8	9.3
Middle East and Asia	1,954	2.2	2.0	Limited a little	8,482	9.4	10.1	Process, plant and machine operatives	2,533	6.0	7.7
Americas and Caribbean	754	0.8	0.6	Not limited	74,424	82.5	80.3	Elementary occupations	4,851	11.5	11.6
Other	325	0.4	0.3								
16. Qualifications				17. Provision of unpaid care				18. Approximate Social Grade			
	Persons	%	Scot %		Persons	%	Scot %		Persons	%	Scot %
<b>All residents 16+</b>	74,232			<b>All residents</b>	90,247			<b>All Household Reference Persons 16 to 64</b>	27,259		
O Grade, St. Grade	15,179	20.5	23.1	Provides no unpaid care	81,982	90.8	90.7	<b>AB</b> - Higher and intermediate managerial/ administrative/ professional	7,027	25.8	18.6
Highers, ONC SVQ 3	12,035	16.2	14.3	Provides 1 - 19 hours per week	4,909	5.5	5.2	<b>C1</b> - Supervisory, clerical, junior managerial/ administrative/ professional	8,569	31.4	31.7
HND, HNC, SVQ 4	6,479	8.7	9.7	Provides 20 - 34 hours per week	742	0.8	0.9	<b>C2</b> - Skilled manual workers	5,424	19.9	21.9
First/ Higher degree, professional qual.	24,721	33.3	26.1	Provides 35 - 49 hours per week	623	0.7	0.8	<b>DE</b> - Semi-skilled, unskilled manual; on state benefits, unemployed, lowest grade workers	6,239	22.9	27.8
No qualifications	15,818	21.3	26.8	Provides 50 or more hrs/ week	1,991	2.2	2.5				

## Definitions

Note: In order to protect against disclosure of personal information, some Census records are swapped between different geographic areas. Some values will be affected, particularly small values at the most detailed geographies.

**1. Key Statistics** – *Household*: is one person living alone; or a group of people (not necessarily related) living at the same address who share cooking facilities and share a living room or sitting room or dining area. A *communal establishment* is defined as an establishment providing managed residential accommodation. Managed means full-time or part-time supervision of the accommodation for example, prisons, large hospitals, hotels, student halls of residence.

**2. Age structure** – Age is derived from the date of birth question and is a person's age on 27th March 2011. Dates of birth that imply an age over 115 were treated as invalid. Infants less than one year old were classed as being 0 years of age. Individual years and gender breakdown for Community Council areas are available on request.

**3. Household composition** – The figure for '1 adult plus children' may include a small number of households with no adults.

**4. Household tenure** – Tenure provides information about whether a household rents or owns the accommodation that it occupies and, if rented, combines this with information about the type of landlord who owns or manages the accommodation. *Owner occupied*: covers owned outright, owned with mortgage or loan and shared ownership, part owned and part rented. *Private rented*: includes rented from a private landlord or letting agency, employer of a household member, relative or friend of a household member, or other non-Social rented.

**5. House type** – *Terraced*: covers end-terrace. *Part of a converted or shared house*: includes bed-sits. *Other*: includes caravan or other mobile temporary structure.

**6. Household size by number or rooms** – Occupancy rating provides a measure of whether a household's accommodation is overcrowded (too few rooms per resident) or under-occupied. It compares the actual number of rooms available to a household and a notional measure of the number of rooms required given the number, age and relationships of the people in the household.

**7. Car availability** – The number of cars or vans owned, or available for use, by one or more members of a household. It includes company cars and vans available for private use.

**8. Travel to work** – Method of travel to work is defined as the method used for the longest part, by distance, of usual journey.

**9. Long-term health condition** – lasted or expected to last at least 12 months.

**10. Ethnic composition/ Religion** – *Ethnic group* classifies people according to their own perceived ethnic group and cultural background. *Religion* is a person's current religious denomination or body that they belong to. No determination is made about whether a person was a practising member of a religion

**11. Economic activity** – relates to whether or not a person aged 16 and over was working or looking for work in the week before the census. Rather than a simple indicator of whether or not someone was currently in employment, it provides a measure of whether or not a person was an active participant in the labour market.

**12. Employment by industry** – The industry in which a person works relates to their main job and is derived from information provided on the main activity of their employer or business.

**13. Country of birth** – The grouping of countries within the classification is broadly regional, but takes into account the grouping of European Union (EU) countries. Countries in the EU are grouped into those that were EU members in March 2001, and those that became members (accession countries) between April 2001 and March 2011 as part of the EU enlargement process.

**14. Health/ Limiting condition** – *General health* is a self-assessment of a person's general state of health. People were asked to assess whether their health was very good, good, fair, bad or very bad. This assessment is not based on a person's health based over any specified period of time. *Limiting condition* – is defined as day to day activities being limited because of a health problem or disability which has lasted, or is expected to last, at least 12 months. This includes problems that are related to old age. People were asked to assess whether their daily activities were limited a lot or a little by such a health problem, or whether their daily activities were not limited at all.

**15. Occupation** – A person's occupation relates to their main job and is derived from either their job title or details of the activities involved in their job.

**16. Qualifications** – Highest level of qualification achieved. Level 1: 0 Grade, Standard Grade, Access 3 Cluster, Intermediate 1 or 2, GCSE, CSE, Senior Certification or equivalent; GSVQ Foundation or Intermediate, SVQ level 1 or 2, SCOTVEC Module, City and Guilds Craft or equivalent. Level 2: SCE Higher Grade, Higher, Advanced Higher, CSYS, A Level, AS Level, Advanced Senior Certificate or equivalent; GSVQ Advanced, SVQ level 3, ONC, OND, SCOTVEC National Diploma, City and Guilds Advanced Craft or equivalent. Level 3: HNC, HND, SVQ level 4 or equivalent. Level 4: and above: Degree, Postgraduate qualifications, Masters, PhD, SVQ level 5 or equivalent; Professional qualifications (for example, teaching, nursing, accountancy).

**17. Provision of unpaid care** – A person is a provider of unpaid care if they look after or give help or support to family members, friends, neighbours because of long-term physical or mental ill health or disability, or problems related to old age. This does not include any activities as part of paid employment. No distinction is made about whether any care that a person provides is within their own household or outside the household, so no explicit link can be made about whether the care provided is for a person within the household who has poor general health or a long-term health problem or disability.

**18. Approximate Social Grade** – Social grade is the socio-economic classification used by the Market Research and Marketing Industries, most often in the analysis of spending habits and consumer attitudes. The Market Research Society ([https://www.mrs.org.uk/cgg/social\\_grade](https://www.mrs.org.uk/cgg/social_grade)) has developed a method for using census information to provide a good approximation of social grade. The concept of a *Household Reference Person* (HRP) was introduced to replace the traditional concept of the 'head of the household'. HRPs provide an individual person within a household to act as a reference point for producing further derived statistics and for characterising a whole household according to characteristics of the chosen reference person.

*For further information about Community Council Census statistics contact the Performance Team, Stirling Council, Old Viewforth, Stirling FK8 2ET, email: [research@stirling.gov.uk](mailto:research@stirling.gov.uk)*